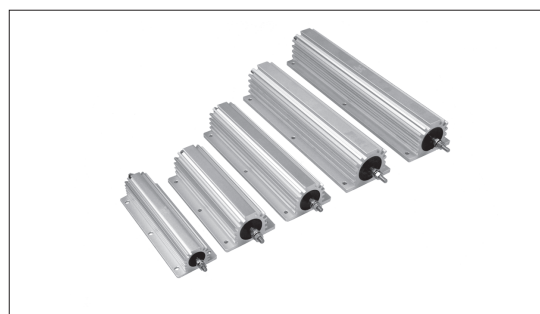
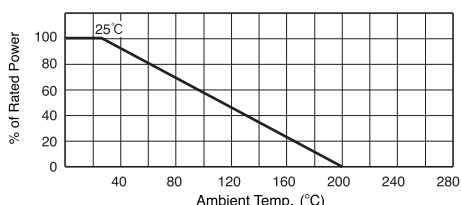


HIGH POWER TYPE METAL CLAD WIRE-WOUND RESISTORS **KW / KWN**

FIG.1

Type		Wattage Rating (W)		Resistance Range (Ω)		Resistance Tolerance (%)	MAX Working (V)		Dielectric Strength. (V)	Operating Temp. (°C)	MAX Weight (g)
Inductive	Non-Inductive	Chassis Mounted	Free Air	Inductive (KW)	Non-Inductive (KWN)		KW	KWN			
KW-100	KWN100	100	50	0.9 ~ 3K	0.75 ~ 1.5K	±1 (F) ±5 (J) ±10 (K)	547	387	AC3000 AC4500 (Special) 1min.	-55~+200	250
KW-150	KWN150	150	70	1.3 ~ 4.7K	1.2 ~ 2.3K		839	587			350
KW-200	KWN200	200	90	2 ~ 7K	1.8 ~ 3.5K		1183	836			655
KW-300	KWN300	300	125	3 ~ 10K	3 ~ 5K		1732	1224			925
KW-400	KWN400	400	150	4.8 ~ 16K	4.5 ~ 8K		2000	1788			1650
KW-500	KWN500	500	200	5.9 ~ 18K	5.5 ~ 9K		2000	2000			1940

Ambient Temp. Derating Curve



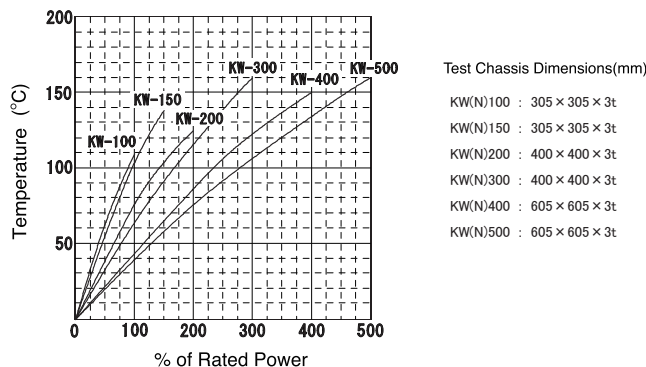
Temp. Coefficient

(Standard Temp. +25°C Test Temp. -55°C, +125°C, +200°C)

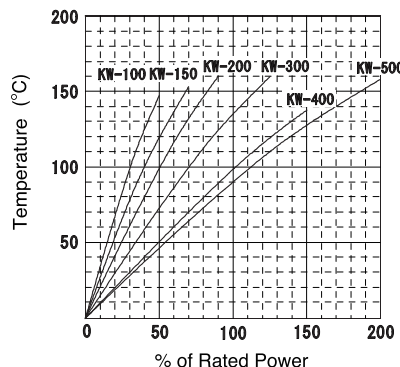
Type	Temp. Coefficient (ppm/°C)		
	±30	±50	±100
KW-100	899 Ω ≤ R	7.1 Ω ≤ R < 899 Ω	7.1 Ω > R
KW-150	1.4K Ω ≤ R	10.6 Ω ≤ R < 1.4K Ω	10.3 Ω > R
KW-200	2.1K Ω ≤ R	16 Ω ≤ R < 2.1K Ω	16 Ω > R
KW-300	2.8K Ω ≤ R	23.9 Ω ≤ R < 2.8K Ω	23.9 Ω > R
KW-400	4.9K Ω ≤ R	37.3 Ω ≤ R < 4.9K Ω	37.4 Ω > R
KW-500	5.9K Ω ≤ R	45.3 Ω ≤ R < 5.9K Ω	45.3 Ω > R

Type	Temp. Coefficient (ppm/°C)		
	±30	±50	±100
KWN100	450 Ω ≤ R	3.5 Ω ≤ R < 450 Ω	3.5 Ω > R
KWN150	700 Ω ≤ R	5 Ω ≤ R < 700 Ω	5 Ω > R
KWN200	1.05K Ω ≤ R	8 Ω ≤ R < 1.05K Ω	8 Ω > R
KWN300	1.4K Ω ≤ R	12 Ω ≤ R < 1.4K Ω	12 Ω > R
KWN400	2.45K Ω ≤ R	19 Ω ≤ R < 2.45K Ω	19 Ω > R
KWN500	2.95K Ω ≤ R	23 Ω ≤ R < 2.95K Ω	23 Ω > R

Surface Temp. Versus Power Load. (on chassis)

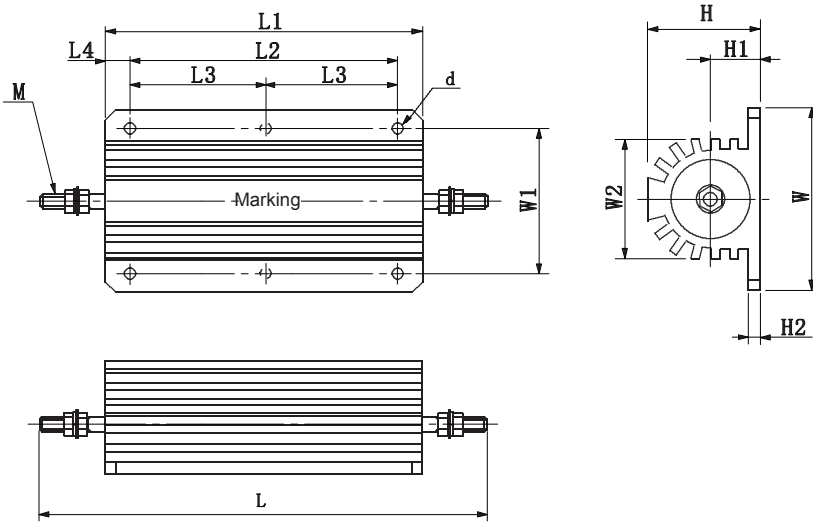


Surface Temp. Versus Power Load. (Free air)



HIGH POWER TYPE METAL CLAD WIRE-WOUND RESISTORS

KW / KWN



Type	Dimensions (mm)												
	L	L1±1	L2±0.8	L3±0.5	L4±0.8	W±0.8	W1±0.8	W2±1	H±0.8	H1±1	H2±0.5	d±0.3	M
KW-100	157	114	90	—	12	52	42	32	33	16	3.2	4.8	M5
KW-150	203	160	136	—	12	52	42	32	33	16	3.2	4.8	M5
KW-200	205	156	132	66	12	71.4	57.2	46	44.5	19.5	4.8	4.8	M6
KW-300	267	218	194	97	12	71.4	57.2	46	44.5	19.5	4.8	4.8	M6
KW-400	329	264	240	120	12	76.2	63.5	54	55.6	25.4	6.4	5.5	M6
KW-500	379	314	290	145	12	76.2	63.5	54	55.6	25.4	6.4	5.5	M6

Performance

Parameters	Test Condition	Specification
Terminal Strength	Torque Test (5~15 sec) KW-100/150 2.7N·m KW-200/300/400/500 3.6N·m	±(0.2%+0.05Ω)
Heat Resistance	200°C 2Hr	±(0.5%+0.05Ω)
Dielectric Strength	FIG.1 1min.	±(0.2%+0.05Ω)
Insulation Resistance	DC500V	1000MΩ以上
Short Time Over Load	5×Wattage Rating 5 sec	±(0.5%+0.05Ω)
Moisture Resistance	Temp. 40°C Moisture 95% 1/10×Wattage Rating (1.5Hr ON 0.5Hr OFF) Repeat 500Hr	±(0.5%+0.05Ω)
Load Life	Load Rating (chassis mounted) 1.5Hr ON 0.5Hr OFF Repeat 1000Hr	KW(N)100~KW(N)500 ±(3%+0.05Ω)
Vibration	10Hz~55Hz~10Hz (1 min) 2Hr each of paralleled and right angle	±(0.2%+0.05Ω)

How to order

KW-100 100Ω F
 Type Resistance Tolerance

- in case of Non-inductive type use KWN
- Standard Resistance E-24 Series J (±5%)



PCN Corporation

Sagamihara Business Office

4-3-17 Sagamihara, Chuo-ku, Sagamihara-shi, Kanagawa-Pref., JAPAN 252-0231
 Phone : 81-42-776-0931 Fax : 81-42-776-0940 E-mail : sales@pcn.co.jp