

PRECISION POWER SHUNT RESISTORS PSS

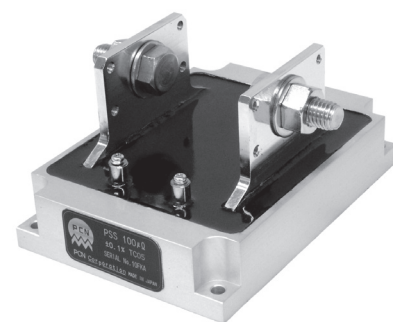
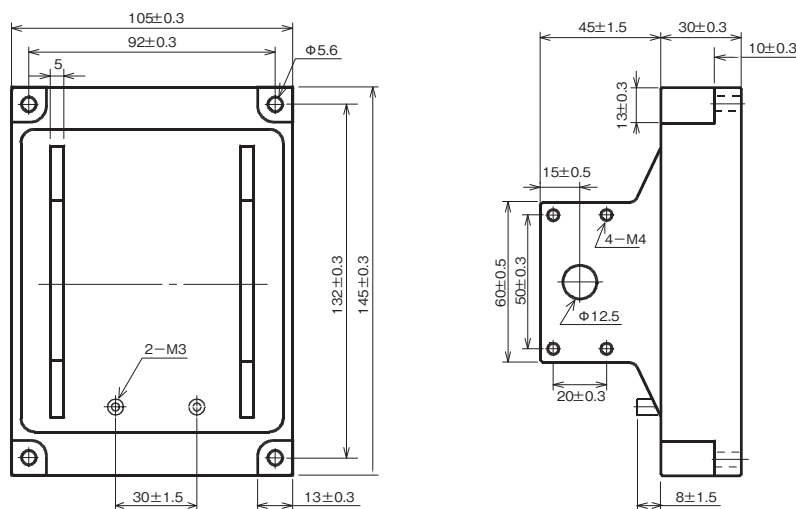
Fig.1

| Type | Wattage Rating | | Standard Resistance ($\mu\Omega$) | Tolerance (%) | Temp.Coefficient (20°C~60°C) ppm/°C | Thermal EMF (0~100°C) | Operating Temp. (°C) |
|------|-----------------|----------|-------------------------------------|-------------------------------------|-------------------------------------|------------------------------------|----------------------|
| | Chassis Mounted | Free Air | | | | | |
| PSS | 100 | 40 | 50, 100, 200, 500, 1000 | $\pm 0.05, \pm 0.1, \pm 0.5, \pm 1$ | $\pm 5, \pm 10$ | 2 $\mu\text{V}/^\circ\text{C}$ MAX | -55~+125 |

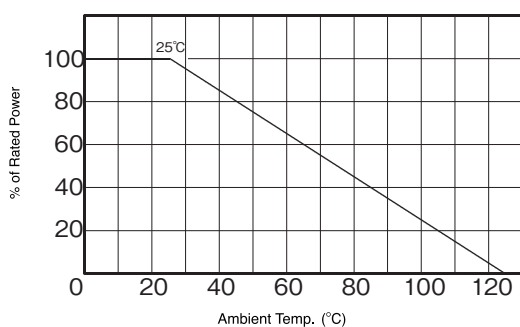
Weight : 1540g

- Max. Current : 1400 A (50 $\mu\Omega$)
- Restriction on Temp. of Resistance Element : +125°C
- Internal Thermal Resistance : 0.4°C/W (100 $\mu\Omega$)

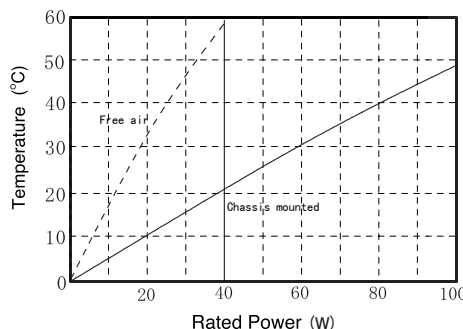
Shape & Dimensions



Ambient Temp. Derating Curve



Surface Temp. Versus Power Load.



Test Chassis Dimensions(mm)
 500 × 500 × 3t * A ℓ
 (Thermal Resistance : About 0.36°C/W)

| Parameters | Test Condition | Specification |
|---------------------------|--|---------------|
| Short Time Over Load | 2 × Wattage Rating 5sec | $\pm 0.05\%$ |
| High Temperature Exposure | Temp. +85°C 1000Hr (Moisture 85%) | $\pm 0.05\%$ |
| Dielectric Strength | AC1000V 1min. | $\pm 0.02\%$ |
| Insulation Resistance | DC500V | 1G Ω |
| Temp. Coefficient | Standard Temp. +25°C, Test Temp. +100°C | Fig.1 |
| Load Life | Load Rating 1.5Hr ON 0.5Hr OFF Repeat 2000Hr | $\pm 0.2\%$ |

How to order

| PSS | 50 $\mu\Omega$ | B | TC05 |
|------|------------------|------------------|--|
| Type | Resistance | Tolerance | Temp.Coefficient |
| | 50 $\mu\Omega$ | A : $\pm 0.05\%$ | TC05 : $\pm 5\text{ppm}/^\circ\text{C}$ |
| | 100 $\mu\Omega$ | B : $\pm 0.1\%$ | TC10 : $\pm 10\text{ppm}/^\circ\text{C}$ |
| | 200 $\mu\Omega$ | D : $\pm 0.5\%$ | |
| | 500 $\mu\Omega$ | F : $\pm 1\%$ | |
| | 1000 $\mu\Omega$ | | |